

Department of Engineering Technology

Summary Enrollment Report

*(Complete enrollment data available online at
<http://www.ent.muohio.edu>
click on Department Documents)*

Fall 2007

*Prepared by: Rob Speckert
October 4, 2007*

Department of Engineering Technology Enrollment Report

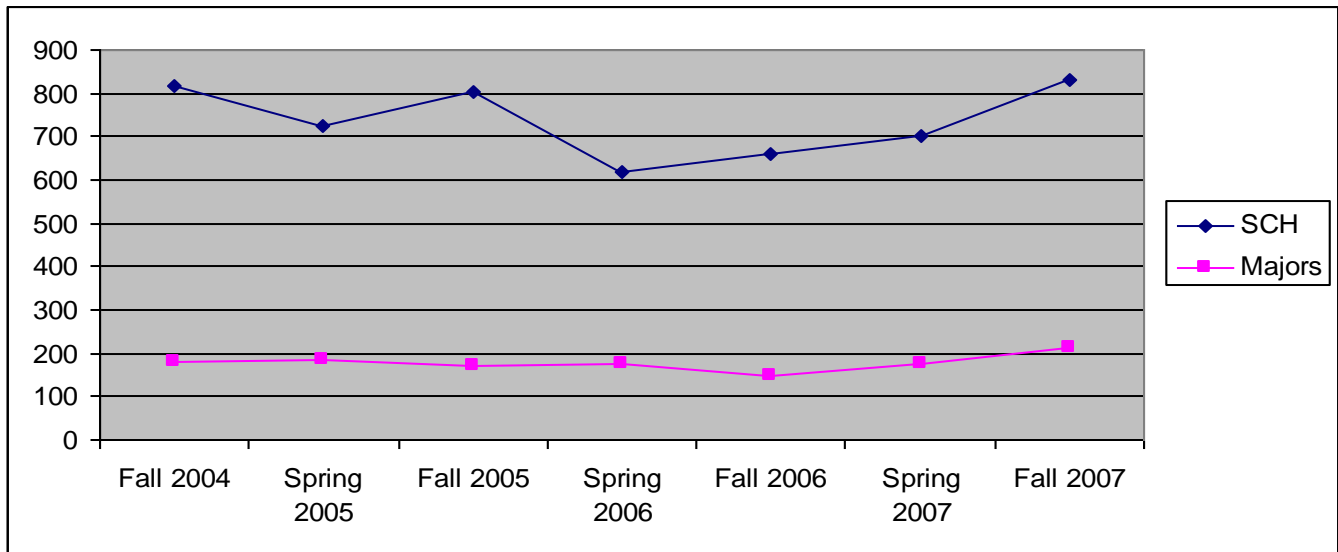
About this report:

This report is prepared every semester and is used for accreditation, program review, and departmental planning and improvement. It contains enrollment summaries for the past two semesters along with a summary of enrollment measures by academic year with associated graphs. This report, along with a comprehensive spreadsheet of departmental enrollments is available on line at www.ent.muohio.edu (click on Department Documents then ENT_EnrollmentReport.doc and ENT Enrollments-Analysis & Targets.xls)

Update, Analysis, and Projections:

The department has experienced a steady increase in student credit hours going from 619 SCH in spring 2006 to 833 SCH in fall 2007—a 35% increase. Majors have also increased to 212 which is 20% higher than spring 2006. Despite these increases, both measures are about 50% of where they need to be.

	Fall 2004	Spring 2005	Fall 2005	Spring 2006	Fall 2006	Spring 2007	Fall 2007
SCH	819	724	804	619	661	700	833
Majors	178	185	170	177	147	176	212



The department continues to be proactive in outreach and recruiting. We are key partners in Tech Prep (K-12), we regularly send letters to prospective and undecided students, and we maintain connections with SEAS in recruiting students who were not accepted to Oxford SEAS programs. We also continue our outreach efforts to area schools through technology workshops, open houses, career presentations, and more. Outreach to business and industry is through our advisory council, co-op and fulltime placement connections, consulting, and senior design. The department believes that there needs to be a systemic change in the approach taken by regional campus recruitment. More emphasis needs to be placed on associate degree recruitment with admission offices being held accountable for meeting targets.

For the BS-EMET program, we are working with several additional colleges to bring them online in 2007-2008 academic year. We estimate this will increase EMET enrollment by approximately 20 majors. We recently signed a Dual Admission agreement with Sinclair CC. We hope this will result in even more Sinclair students coming to our program to complete their BS degree. We plan to do the same with Cincinnati State.

Department of Engineering Technology
ENROLLMENT SUMMARY
First Semester 2007-2008 (Fall 2007)

ECET-AD

<u>Campus</u>	<u>Majors</u>	<u>Enrolled</u>	<u>Ave Cr</u>	<u>Std Dev</u>
Ham	16	172	7.82	4.40
Midd	18	214	8.23	4.17
Oxf	1	15		
Totals	35	401		

MET-AD

<u>Campus</u>	<u>Majors</u>	<u>Enrolled</u>	<u>Ave Cr</u>	<u>Std Dev</u>
Ham	26	252	8.13	3.55
Midd	12	120	8.00	4.00
Oxf	0			
Totals	38	372		

BS Completion

<u>Campus</u>	<u>Majors</u>	<u>Enrolled</u>	<u>Ave Cr</u>	<u>Std Dev</u>
Ham	80	562	6.24	3.74
Midd	44	501	7.48	4.32
Oxf	0	4		
Totals	124	1067		

Note:

APET 18 is MET BS	APET-18	MET	31	
APET 12 is EMET BS	APET-12	EMET	48	
APET BB is old EMET BS	APET- BB	EMET	13	(may include some MET)
			92	

Entire Department

	1st Maj	2nd Maj	Total-Maj	Ha m	Midd	Ox	Total
BS(APET)	120	30	150	80	44	0	124
MET(APPC)	37	40	77	26	12	0	38
ECET(APPE and APPZ)	32	19	51	16	18	1	35
Total	189	89	278	122	74	1	197
Other	16	(includes certificates and others)					
Freshman	63		Male	192	94%		
Sophomore	35		Female	12	6%		
Junior	42		Total	204			
Senior	65						
Total	205						

Notes: Enrolled is total credit hours generated by Engineering Technology students. Electrical Engineering Technology (EET) program name changed to Electrical and Computer Engineering Technology (ECET) in Spring 2004.

Department of Engineering Technology
ENROLLMENT SUMMARY
First Semester 2006-2007 (Fall 2006)

ECET-AD				
<u>Campus</u>	<u>Majors</u>	<u>Enrolled</u>	<u>Ave Cr</u>	<u>Std Dev</u>
Ham	19	211	7.81	4.57
Midd	15	180	9.00	3.79
Oxf	0	3		
Totals	34	394		

MET-AD				
<u>Campus</u>	<u>Majors</u>	<u>Enrolled</u>	<u>Ave Cr</u>	<u>Std Dev</u>
Ham	24	255	11.09	3.46
Midd	12	123	7.69	4.15
Oxf	0			
Totals	36	378		

BS Completion				
<u>Campus</u>	<u>Majors</u>	<u>Enrolled</u>	<u>Ave Cr</u>	<u>Std Dev</u>
Ham	53	335	6.32	3.75
Midd	20	273	6.20	3.62
Oxf	0	0		
Totals	73	608		

Note:

APET 18 is MET BS	APET-18	MET	23	
APET 12 is EMET BS	APET-12	EMET	34	
APET BB is old EMET BS	APET-BB	EMET	15	(may include some MET)
			72	

Entire Department							
	1st Maj	2nd Maj	Total-Maj	Ham	Midd	Ox	Total
BS(APET)	73	35	108	53	20	0	73
MET(APPC)	36	12	48	24	12	0	36
ECET(APPE and APPZ)	39	6	45	19	15	0	34
Total	148	53	201	96	47	0	143
Other	5 (includes certificates and others)						

Freshman	47	Male	145	95%
Sophomore	31	Female	8	5%
Junior	33	Total	153	
Senior	42			
Total	153			

Notes: Enrolled is total credit hours generated by Engineering Technology students. Electrical Engineering Technology (EET) program name changed to Electrical and Computer Engineering Technology (ECET) in Spring 2004.