

Department of Engineering Technology

Summary Enrollment Report

*(Complete enrollment data available online at
<http://www.ent.muohio.edu>
click on Department Documents)*

Fall 2008

*Prepared by: Rob Speckert
September 11, 2008*

Department of Engineering Technology Enrollment Report

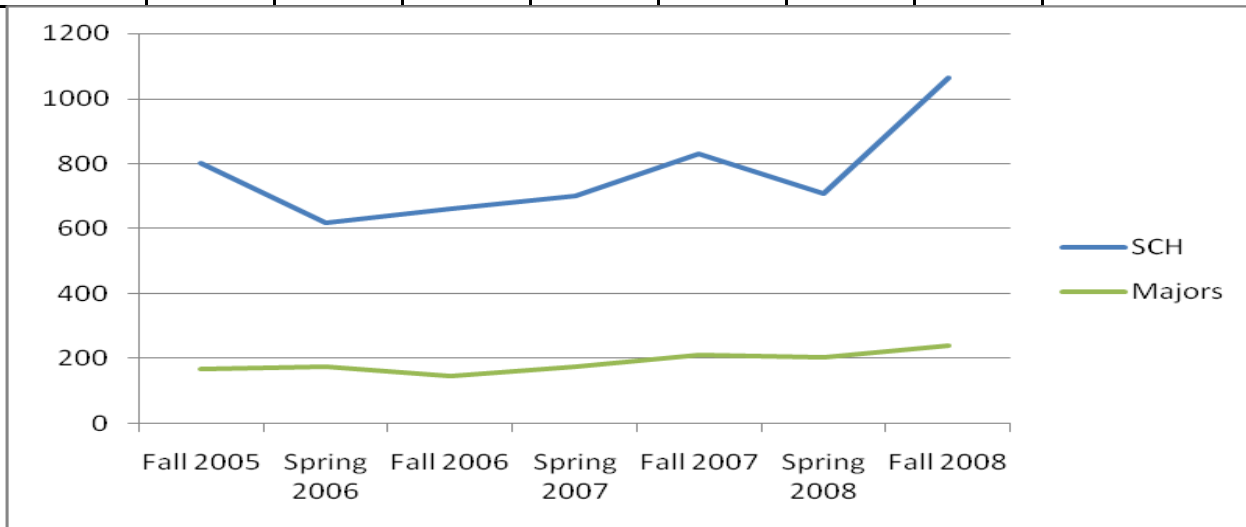
About this report:

This report is prepared every semester and is used for accreditation, program review, and departmental planning and improvement. It contains enrollment summaries for fall 2006, fall 2007, and fall 2008. Summary data are provided on the last two pages. Detailed data are available on our web page at www.ent.muohio.edu (click on Department Documents then ENT_EnrollmentReport.doc and ENT Enrollments-Analysis & Targets.xls)

Update, Analysis, and Projections:

The department had been experiencing a steady increase in student credit hours going from 661 SCH in fall 2006 to 1065 SCH in fall 2008—a 61% increase. Majors also continued to increase with 147 in fall 2006, 212 in fall 2007, and 239 in fall 2008. Despite these increases, both measures are about 60% of where they need to be.

	Fall 2005	Spring 2006	Fall 2006	Spring 2007	Fall 2007	Spring 2008	Fall 2008
SCH	804	619	661	700	833	710 <i>(752)*</i>	1065 <i>(1104)*</i>
Majors	170	177	147	176	212	204	239



* In spring 2008, the department began delivering EAS 101 and 102. We generated 42 SCH in spring 2008 and 39 SCH in fall 2008 from these courses.

For the BS-EMET program, we added several additional college partners some of which had students beginning summer 2008. This will have a continuing positive impact on EMET enrollments. Additionally, the number of majors in the BS-MET jumped considerably for fall 2008. This is a good sign indeed!

Department of Engineering Technology
ENROLLMENT SUMMARY
First Semester 2008-2009 (Fall 2008)

ECET-AD

<u>Campus</u>	<u>Majors</u>	<u>Enrolled</u>	<u>Ave Cr</u>	<u>Std Dev</u>
Ham	16	194	7.76	4.38
Midd	11	152	8.00	3.68
Oxf	1	9		
Totals	28	355		

MET-AD

<u>Campus</u>	<u>Majors</u>	<u>Enrolled</u>	<u>Ave Cr</u>	<u>Std Dev</u>
Ham	27	291	10.03	4.28
Midd	12	156	7.80	4.53
Oxf	1	12		
Totals	40	459		

BS Completion

<u>Campus</u>	<u>Majors</u>	<u>Enrolled</u>	<u>Ave Cr</u>	<u>Std Dev</u>
Ham	109	1581	7.89	4.70
Midd	47	691	8.86	5.01
Oxf	0	6		
Totals	156	2278		

Note:

APET 18 is MET BS	APET-18	MET	65	
APET 12 is EMET BS	APET-12	EMET	75	May include some MET
APET BB is old EMET BS	APET-BB	EMET	15	
			<u>155</u>	

Notes: Enrolled is total credit hours generated by Engineering Technology students. Electrical Engineering Technology (EET) program name changed to Electrical and Computer Engineering Technology (ECET) in Spring 2004.

Entire Department (some inconsistency in totals due to non-reporting of status)

	1st Maj	2nd Maj	Total- Maj	Ham	Midd	Ox	Total
BS(APET)	142	29	171	109	47	0	156
MET(APPC)	39	33	72	27	12	1	40
ECET(APPE and APPZ)	30	20	50	16	11	1	28
Total	211	82	293	152	70	2	224

Other (includes certificates and others) 17

Freshman	69	Male	212	93%	WH	181	79%
Sophomore	48	Female	15	7%	BL	20	9%
Junior	45	Total	227		HS	3	1%
Senior	66				UK	17	7%
Total	228				AS	5	2%
					PI	1	0%
					AA	1	0%

228

Department of Engineering Technology
ENROLLMENT SUMMARY
First Semester 2007-2008 (Fall 2007)

ECET-AD

<u>Campus</u>	<u>Majors</u>	<u>Enrolled</u>	<u>Ave Cr</u>	<u>Std Dev</u>
Ham	16	172	7.82	4.40
Midd	18	214	8.23	4.17
Oxf	1	15		
Totals	35	401		

MET-AD

<u>Campus</u>	<u>Majors</u>	<u>Enrolled</u>	<u>Ave Cr</u>	<u>Std Dev</u>
Ham	26	252	8.13	3.55
Midd	12	120	8.00	4.00
Oxf	0			
Totals	38	372		

BS Completion

<u>Campus</u>	<u>Majors</u>	<u>Enrolled</u>	<u>Ave Cr</u>	<u>Std Dev</u>
Ham	80	562	6.24	3.74
Midd	44	501	7.48	4.32
Oxf	0	4		
Totals	124	1067		

Note:

APET 18 is MET BS	APET-18	MET	31	
APET 12 is EMET BS	APET-12	EMET	48	
APET BB is old EMET BS	APET- BB	EMET	13	(may include some MET)
			92	

Entire Department

	1st Maj	2nd Maj	Total-Maj	Ham	Midd	Ox	Total
BS(APET)	120	30	150	80	44	0	124
MET(APPC)	37	40	77	26	12	0	38
ECET(APPE and APPZ)	32	19	51	16	18	1	35
Total	189	89	278	122	74	1	197
Other	16	(includes certificates and others)					
Freshman	63	Male	192	94%			
Sophomore	35	Female	12	6%			
Junior	42	Total	204				
Senior	65						
Total	205						

Notes: Enrolled is total credit hours generated by Engineering Technology students. Electrical Engineering Technology (EET) program name changed to Electrical and Computer Engineering Technology (ECET) in Spring 2004.

Department of Engineering Technology
ENROLLMENT SUMMARY
First Semester 2006-2007 (Fall 2006)

ECET-AD				
<u>Campus</u>	<u>Majors</u>	<u>Enrolled</u>	<u>Ave Cr</u>	<u>Std Dev</u>
Ham	19	211	7.81	4.57
Midd	15	180	9.00	3.79
Oxf	0	3		
Totals	34	394		

MET-AD				
<u>Campus</u>	<u>Majors</u>	<u>Enrolled</u>	<u>Ave Cr</u>	<u>Std Dev</u>
Ham	24	255	11.09	3.46
Midd	12	123	7.69	4.15
Oxf	0			
Totals	36	378		

BS Completion				
<u>Campus</u>	<u>Majors</u>	<u>Enrolled</u>	<u>Ave Cr</u>	<u>Std Dev</u>
Ham	53	335	6.32	3.75
Midd	20	273	6.20	3.62
Oxf	0	0		
Totals	73	608		

Note:

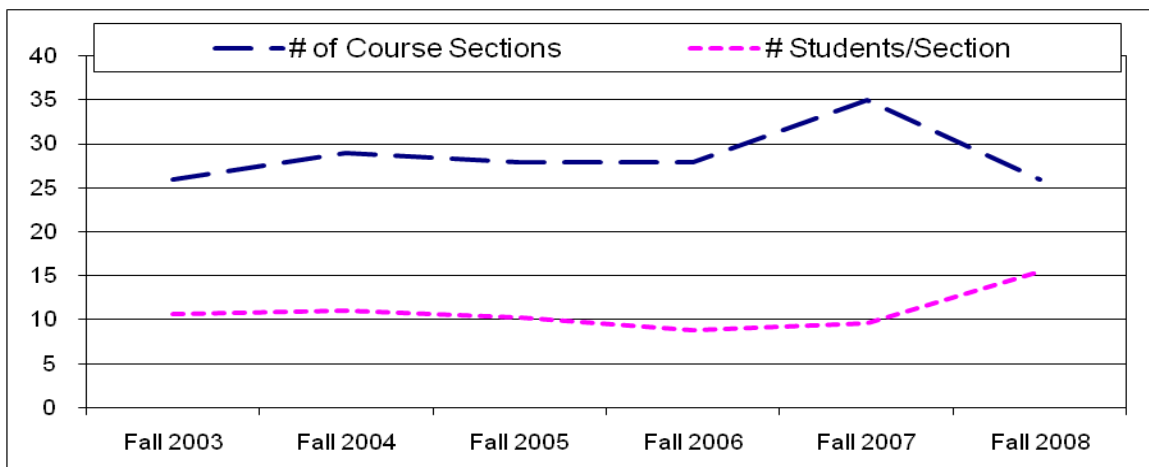
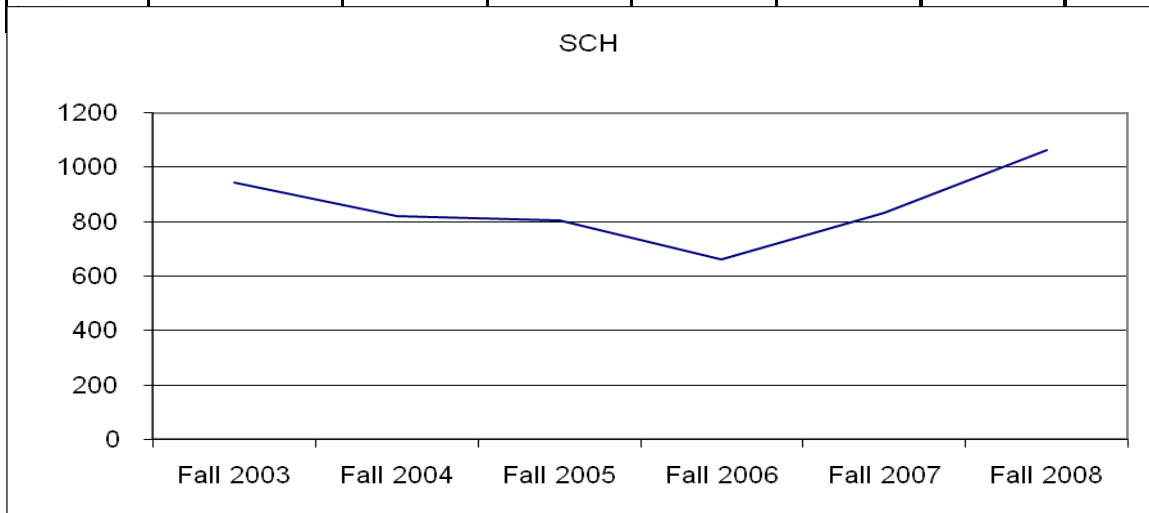
APET 18 is MET BS	APET-18	MET	23	
APET 12 is EMET BS	APET-12	EMET	34	
APET BB is old EMET BS	APET-BB	EMET	15	(may include some MET)
			72	

Entire Department							
	1st Maj	2nd Maj	Total-Maj	Ham	Midd	Ox	Total
BS(APET)	73	35	108	53	20	0	73
MET(APPC)	36	12	48	24	12	0	36
ECET(APPE and APPZ)	39	6	45	19	15	0	34
Total	148	53	201	96	47	0	143
Other	5 (includes certificates and others)						

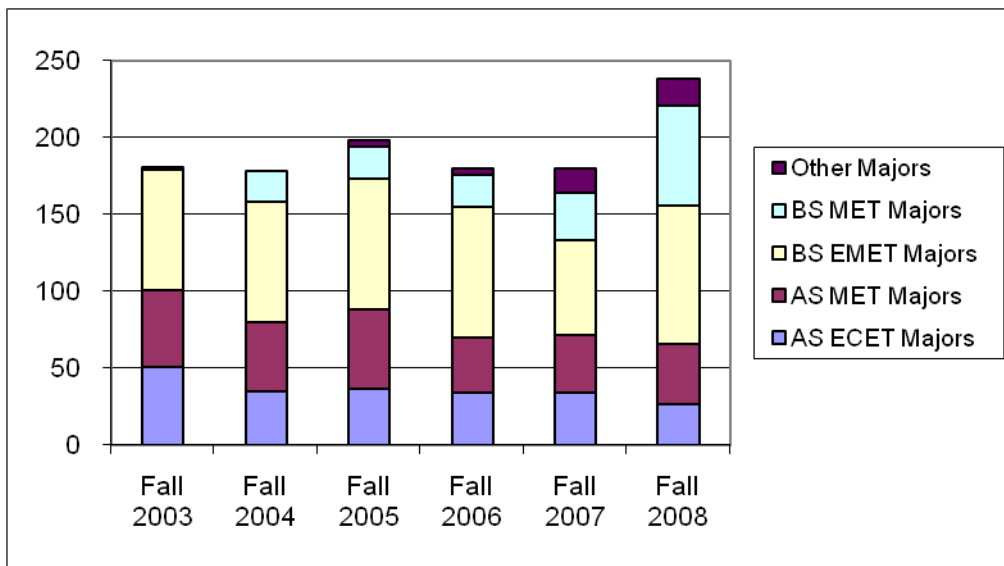
Freshman	47	Male	145	95%
Sophomore	31	Female	8	5%
Junior	33	Total	153	
Senior	42			
Total	153			

Notes: Enrolled is total credit hours generated by Engineering Technology students. Electrical Engineering Technology (EET) program name changed to Electrical and Computer Engineering Technology (ECET) in Spring 2004.

	Fall 2003	Fall 2004	Fall 2005	Fall 2006	Fall 2007	Fall 2008
SCH	946	819	804	661	833	1065
# of Course Sections	26	29	28	28	35	26
# Students/Section	10.6	11.1	10.3	8.82	9.63	15.5
FTE FT (w/part-time) ^(b)	9 (10)	8 (9)	8 (10)	9 (11.5)	9 (11.75)	9(10.25)
SCH/FT (w/part-time)	105 (95)	102 (91)	100 (80)	73 (56)	93 (71)	118 (104)



	Fall 2003	Fall 2004	Fall 2005	Fall 2006	Fall 2007	Fall 2008
AS ECET Majors	51	35	37	34	34	27
AS MET Majors	50	45	51	36	38	39
BS EMET Majors	78	78	85	85	61	90
BS MET Majors	n/a	20	21	21	31	65
Other Majors	2	0	4	4	16	17
Total ENT Majors	181	178	198	180	180	238



(ENT_EnrollmentRedport.doc)